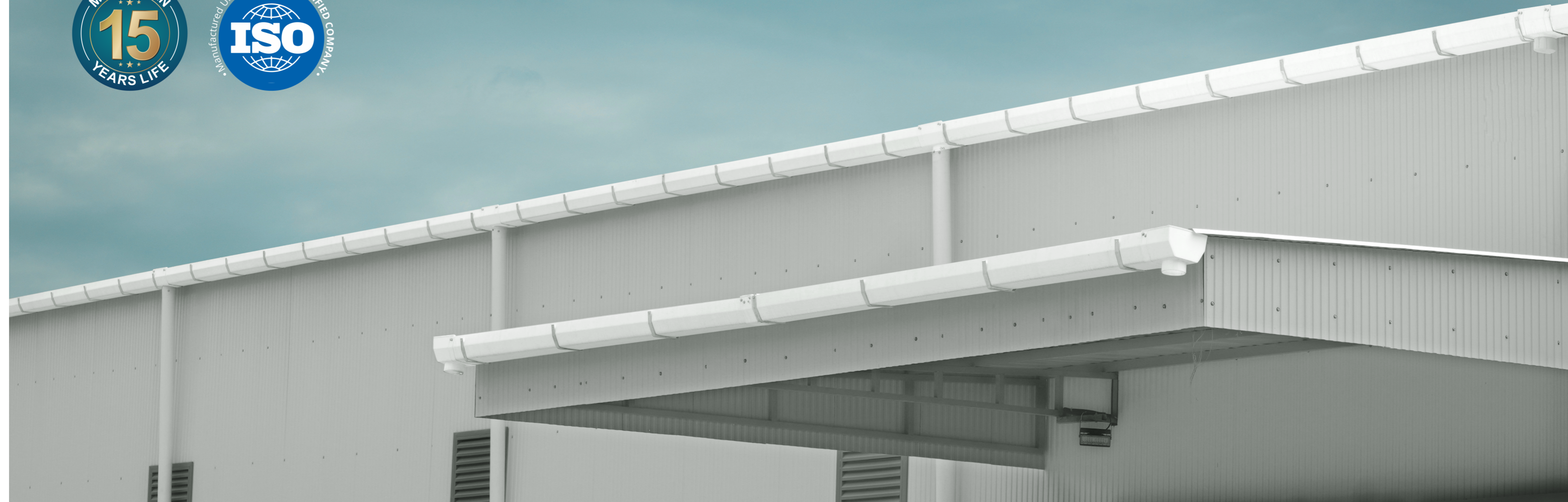


starsupremeindia.com

starsupremeindia.com

# uPvc Rain Water Gutters.

Collect Rain.,  
Conserve Water..!



Marketed by: **SAKTHI ENTERPRISES**

📍 Koovappady P.O, Koodalappad, Perumbavoor  
Ernakulam Dist., Kerala, INDIA - 683 544

☎ +91 7902 331 334  
+91 9061 331 334

📧 starsupremeindia@gmail.com  
starsupremeindia.com





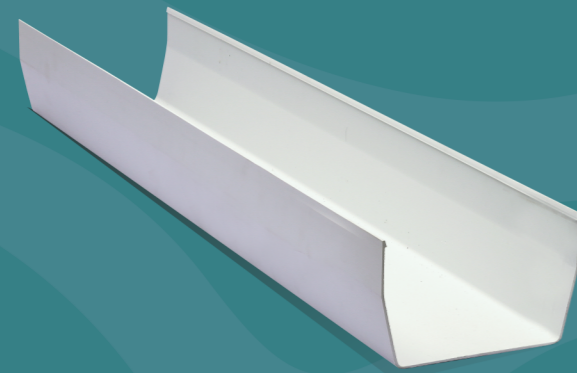
Star supreme square shaped uPvc gutters are made with fine quality raw materials ensuring long life and durability. 6" & 9" width uPvc gutters suitable for all kind of roofings. 6" gutter have 90mm and 9" gutter have 110mm dropping outlets which is enable fast water discharging within few seconds. Allied fittings are perfectly designed to connect easily.

Star supreme uPvc gutters and fittings presents a unique experience to your rain water management and keep buildings at its beauty.



starsupremeindia.com

## uPvc Rain Water Gutters.

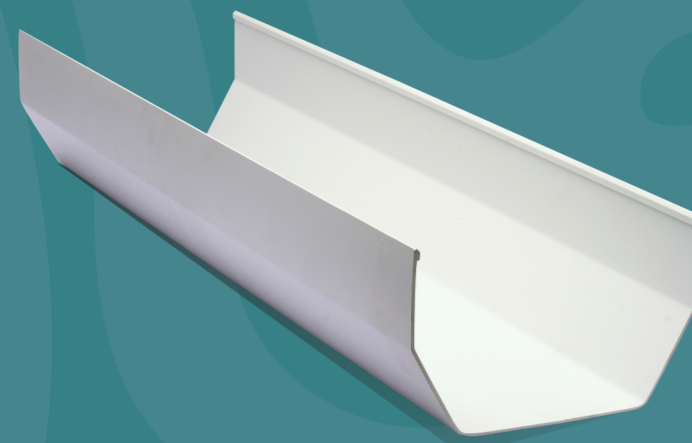


### 6" Gutter

Colours



Length: 3 & 5 mtrs.



### 9" Gutter

Colours

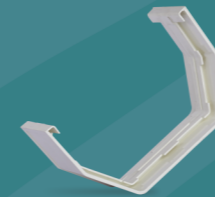


Length: 3 & 5 mtrs.



End Cap

End Caps are essential components of water gutter systems, ensuring they function efficiently by securely sealing the ends of gutter sections while also contributing to the system's appearance and longevity.



Gutter Joint

Gutter Joint is a critical component that facilitates the seamless operation of a gutter system by securely connecting individual gutter sections while maintaining water tightness and structural integrity.



Elbow / Corner Joint

Elbow Joints (or corner joints) are crucial components in gutter systems, facilitating directional changes, ensuring efficient water drainage, providing structural support, and enhancing the aesthetic integration of the gutter installation around corners of buildings.



uPvc Bracket

Brackets in a water gutter system play a crucial role in providing structural support, maintainin gutter alignment, preventing damage, and ensuring effective water drainage. They are essential components that contribute to the longevity and functionality of the gutter system.



uPvc Bracket with Metal Extension



G.I Bracket



## Gutter Fittings

Sizes: 6"  9"



End Drop

End Drop for a gutter plays a crucial role in the effective functioning of the gutter system by directing water into the downspout and away from the building. It contributes to both the performance and longevity of the gutter system, helping to protect the structure from water-related damage.



Middle Drop

Middle Drop in a gutter system plays a significant role in ensuring effective drainage and structural integrity. It helps manage water flow, prevents overflow, supports the gutter structure, and contributes to the overall functionality and longevity of the gutter system.



Elbow / Corner Drop

Elbow Drop (or corner drop) plays a crucial role in ensuring effective water drainage, preventing overflow, providing structural support, and maintaining the aesthetic integrity of a gutter system at inside corners of buildings.